

AMERICAN *Custom Lifts*



THE TITAN LIFT

AMERICAN MADE – AMERICAN STEEL – BUILT TO LAST



3 1/2" diameter cylinder. Most competitors use 3" cylinder



Heavy gauge cables. Ball in bearing pulleys



Lowering valve. Easy to use.



Advanced design offers additional stability

AMERICAN *Custom Lifts*



**Positive locking
Mechanism**



**Single Point lock
release**



**Solid American
steel runways –
not pieced**



**Titan SUV offers
plenty of clearance**

Standard Features and Benefits

- **7000 LB. LIFTING CAPACITY:** Effortlessly lifts cars, vans and SUV's.
- **STATE-OF-THE-ART OUTSIDE SLIDER CARRIGE:** Advanced geometric design -provides significant additional strength and stability without sacrificing space.
- **POSITIVE LOCKING MECHANISM:** Precision-engineered locking mechanism automatically engages easy-to-see locks for maximum safety.
- **SINGLE-POINT LOCK RELEASE:** Releases all four locks simultaneously.
- **BEARING IN PULLEY:** Most other lift companies offer brass or plastic sheaves which are not designed for continuous lifting cycles and will eventually wear out. The TITAN LIFT uses ball bearing pulleys that are designed for commercial applications where one may operate 30 plus cycles per day.
- **NON-SAG ROUNDED EDGED DIAMOND PLATE STEEL TRACKS**
- **LIGHTWEIGHT ALUMINUM RAMPS:** One pair free with your TITAN LIFT. Ultra-low (4" high x 36" long) profile accommodates even the lowest-riding vehicles. Each ramp weighs only 16 lbs. for easy removal (steel ramps weigh 45 lbs.).

AMERICAN *Custom Lifts*

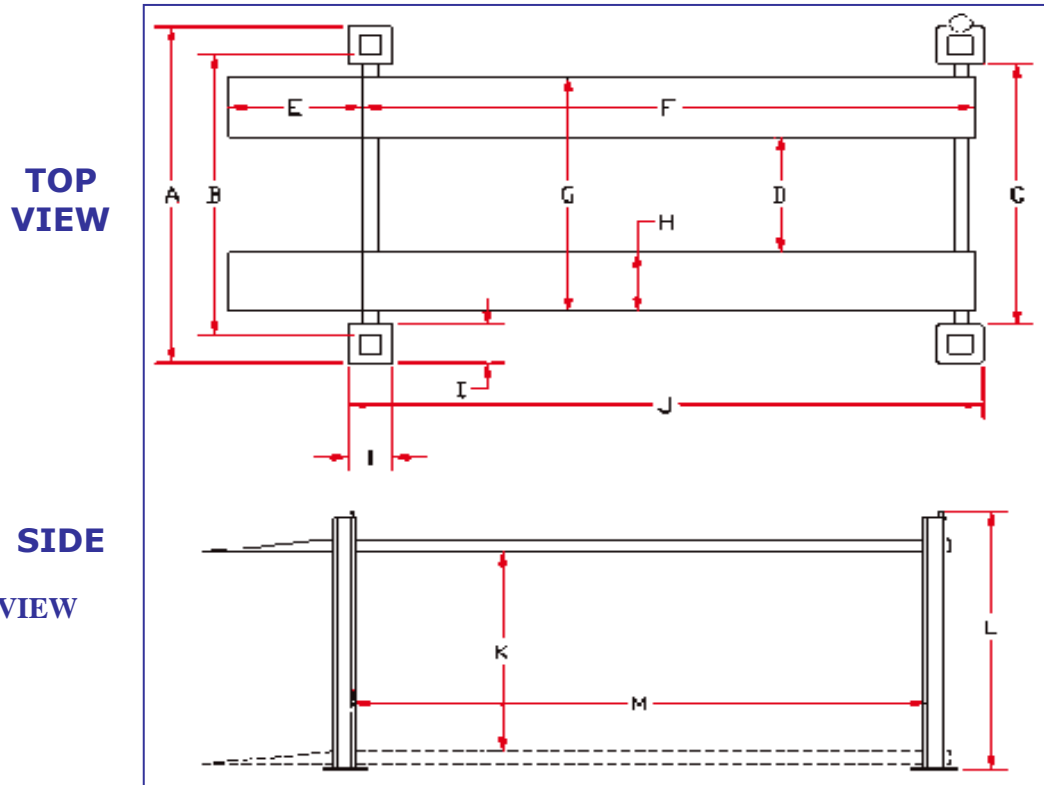
- **EXTRA WHEEL STOPS INCLUDED:** Simply replace the removable ramps with these stops for safe long-term storage.
- **PLENTY OF LIFTING HEIGHT:** Accommodates virtually all sport utility vehicles and mini vans. Ample headroom for doing underbody work. Std model: 67" clearance on top lock. SUV model: 77" clearance on top lock.
- **TEN DIFFERENT LOCKING POSITIONS:** Locks are positioned at approximately 4 3/8" apart, allowing you to choose the lifting height that best fits your needs.
- **HEAVY DUTY POWER UNIT:** 110V or 220v power unit at no additional cost.
- **3½" DIAMETER CYLINDER:** Smaller cylinders may be overworked and prone to leakage.
- **½ GAUGE BASEPLATE:** Most other lift companies use a 3/8" gauge base plate. These tend to warp when welded to the columns when cooling, thus causing lift to rest uneven on foundation. With the TITAN LIFT ½ gauge baseplate, the lift will always rest flush which prevents the lift from swaying.
- **POWDER-COAT FINISH FOR INDOOR/OUTDOOR USE:** Your choice of red, blue or black.
- **HEAVY GAUGED AIRCRAFT QUALITY CABLES:** Lift operates on four independent cables rated at 14,500 lbs. each (58,000 lb. combined cable-load capacity).
- **EASY INSTALLATION:** Do it yourself or use our nationwide professional installation service.

Optional Accessories

- **JACK TRAY** – for use with bottleneck jacks for doing wheel/brake work -
- **CASTERS WITH NEOPRENE-COATED WHEELS** – to make the lift portable so you can move it around
- **SET OF TWO REMOVABLE SOLID CENTERS** – enables you to store bikes, lawnmowers, boxes, etc. – steel / lightweight aluminum
- **EXTRA DRIP PANS**
- **EXTRA ALUMINUM RAMPS** (you get one pair free with your TITAN LIFT)

AMERICAN Custom Lifts

OS-7 TITAN LIFT SPECIFICATIONS



10 Locking Heights

Clearance – Inches*

Std. / Narr.	SUV
67	77
62 5/8	72 5/8
58 1/4	68 1/4
53 7/8	63 7/8
49 1/2	59 1/2
45 1/8	55 1/8
40 3/4	50 3/4
36 3/8	46 3/8
32	42
16 1/4	26 1/4

Your ceiling height must be at least:

Total height of both vehicles plus 10"

SPECIFICATIONS ARE APPROXIMATE – SUBJECT TO CHANGE WITHOUT NOTICE

TITAN MODELS:		TITAN (Narrow)	TITAN OS-7	TITAN SUV
Total Width (to outside base plates)	A	106"	111"	111"
Width Between Posts	B	92"	98"	98"
Width Between Base Plates	C	81"	87"	87"
Width Between Tracks	D	38"	38"	38"
Ramp Length	E	36"	36"	36"
Track Length (without ramp)	F	160"	160"	180"
Track Outside Width	G	76"	76"	76"
Track Width	H	19"	19"	19"
Base Plate Dimensions	I	12" x 12"	12" x 12"	12" x 12"
Overall Length (to outside base plates)	J	170"	170"	190"
Max. Clearance (for lower vehicle)	K	67" on top lock	67" on top lock	77" on top lock

AMERICAN *Custom Lifts*

Overall Height	L	84"	84"	94"
Length Between Posts	M	151.5"	151.5"	171.5"
Lifting Capacity		7000 lbs.	7000 lbs.	7000 lbs.
Power Unit (110 V Standard)		110 V, 1 HP, 30 amp	110 V, 1 HP, 30 amp	110 V, 1 HP, 30 amp
Power Unit (High-Speed)		220 V, 2 HP, 30 amp	220 V, 2 HP, 30 amp	220 V, 2 HP, 30 amp



