

AMERICAN *Custom Lifts*

**AMERICAN MADE AND APPROVED:
P602-ACC6 COMMERCIAL@PARK**



THINK
V
E
R
T
I
C
A
L



SAVE-SPACING SHARED POST DESIGN

Adjacent units share a common post to allow storage of more vehicles in a given area.

CABLE EQUALIZATION MECHANISM:

Ensures that lift platform remains level when being raised, even if vehicle load is not centered.

LIFTS MOST CARS, VANS AND SUVs:

Structurally rated to lift 6,000 lbs
Seismically rated for 6,000 lbs.

SUPERIOR LIFTING HEIGHT:

82" of clearance on top lock to accommodate virtually any car, van and SUV on the market.

OPERATES ON SLOPED LOTS:

Asphalt model is designed to operate on a side-to-side slope of up to 2" and an end-to-end slope of up to 4".

208/320v POWER UNITS:

208/230v high speed motor (30 amp circuit recommend) or 3 Phase 230/460v.

Some examples of recent projects...



Cadillac-Subaru Dealership, CA – This large dealership wanted to increase their revenue by reducing vehicle retrieval time in their fast-paced Subaru service area. They decided to start out with ten robust 2-high lifts that were seismically approved and built for outdoor use on asphalt. The lift we recommended was our new state-of-the-art **CommercialPark (model ACC6A)**.



Newport, CA (During Installation) – This parking facility, situated near the coast, previously had installed parking lifts, which had worn out due to high oxidation. Consequently, the owner has decided to install 49 fully galvanized **CommercialParks**.



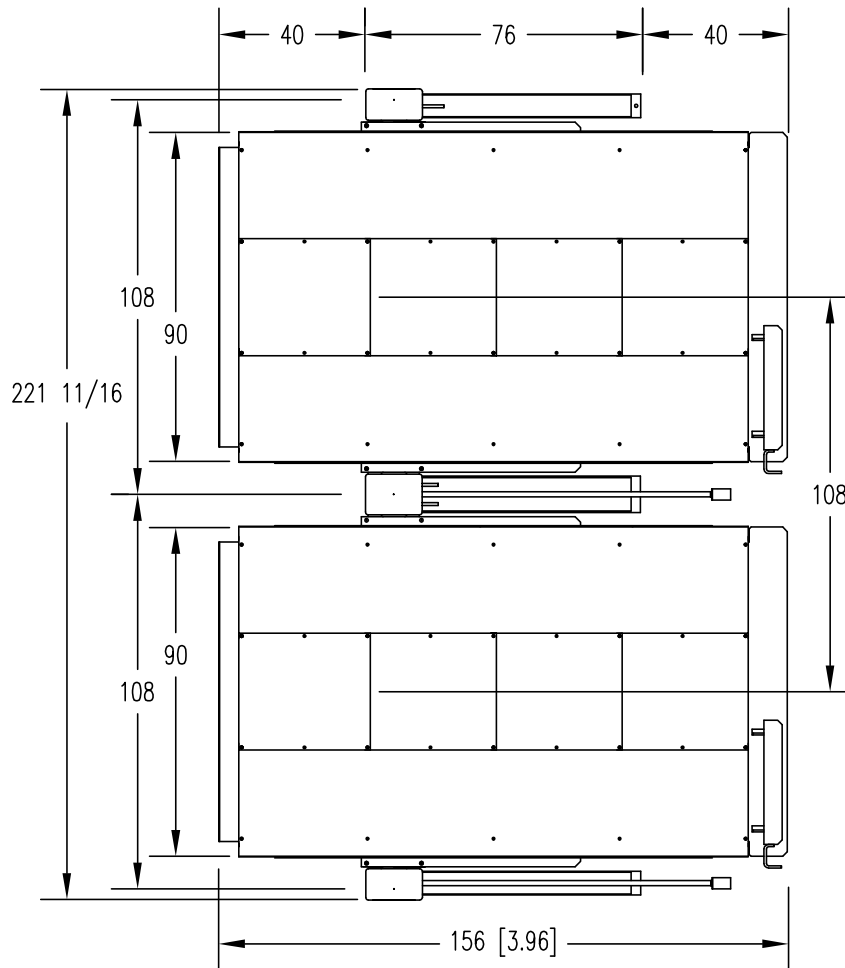
AMERICAN
Custom Lifts

www.aclifts.com 619-286-5438 888-711-LIFT

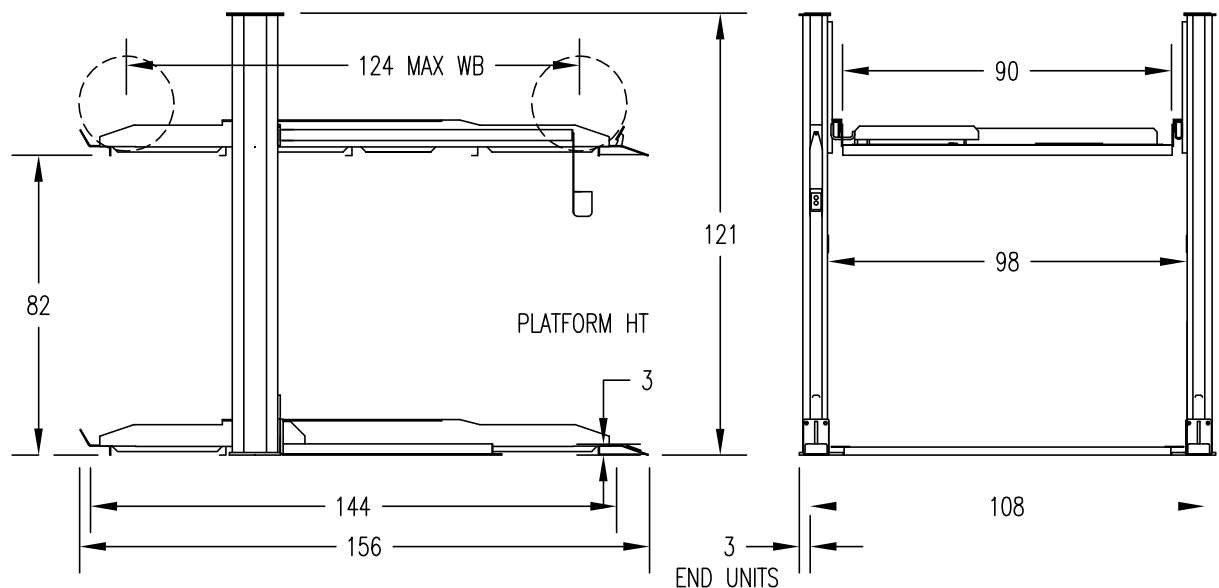
ACC-6 9' CENTERS - DOUBLE STACK PARKING LIFT



619-286-5438
or
888-711-LIFT

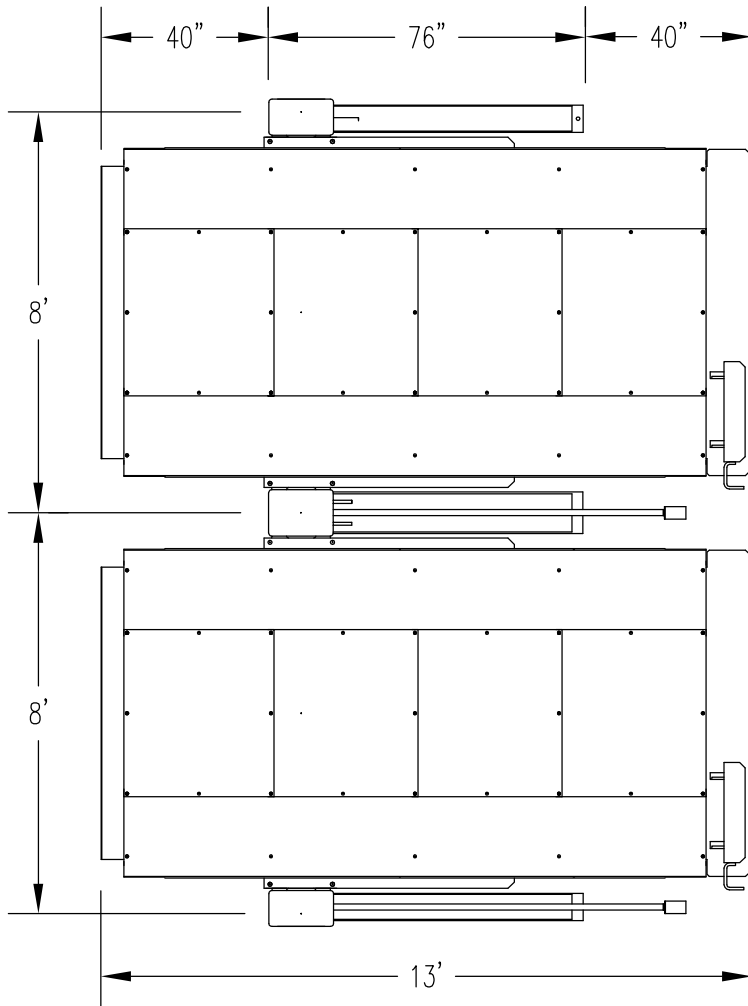


MAX CAPACITY.....6000 LB
OVERALL LENGTH.....13'
PLATFORM LENGTH.....12'-0"
MAXIMUM WHEELBASE.....129"
INSIDE HEIGHT CLEARANCE.....82"
COLUMN HEIGHT.....10'-1"
SPEED OF RISE (CENTRAL PU)...25 SEC
INDOOR/OUTDOOR INSTALLATION
FREE STANDING UNIT ON CONCRETE/ASPHALT
BOLT TO CONCRETE PAD FOR EARTHQUAKE
ZONE 1, 2, 5" CONC PAD 3000 PSI COMP
3/8 REBAR ON 16" CENTERS 2 DIRECTIONS
MECHANICAL LOCKS EACH COLUMN
SINGLE POINT MANUAL LOCK RELEASE
POSITIVE LOCKING REAR STOP
208/230V 3 PH CENTRAL POWER UNIT
OR 208/230V 1 PH INDIVIDUAL PWR UNIT



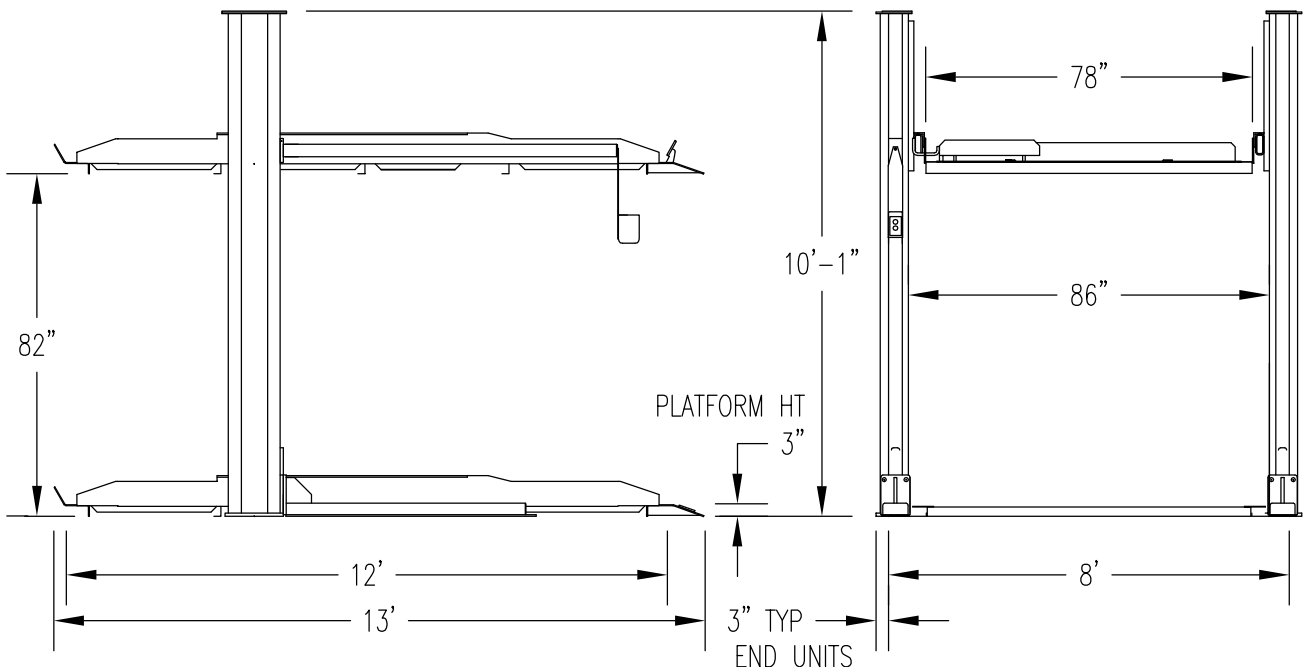
SPECIFICATIONS SUBJECT TO CHANGE WITHOUT NOTICE OR LIABILITY

ACC-6 8' CENTERS - DOUBLE STACK PARKING LIFT



619-286-5438
or
888-711-LIFT

MAX CAPACITY.....6000 LB
CENTERLINE WIDTH.....8'-0"
INSIDE PLATFORM WIDTH.....78"
INSIDE COLUMN WIDTH.....86"
OVERALL LENGTH.....13'
PLATFORM LENGTH.....12'-0"
MAXIMUM WHEELBASE.....129"
INSIDE HEIGHT CLEARANCE.....82"
COLUMN HEIGHT.....10'-1"
SPEED OF RISE (CENTRAL PU)...25 SEC
INDOOR/OUTDOOR INSTALLATION
FREE STANDING UNIT ON CONCRETE/ASPHALT
BOLT TO CONCRETE PAD FOR EARTHQUAKE
MECHANICAL LOCKS EACH COLUMN
SINGLE POINT MANUAL LOCK RELEASE
POSITIVE LOCKING REAR STOP
208/230V 3 PH CENTRAL POWER UNIT
OR 208/230V 1 PH INDIVIDUAL PWR UNIT



ACC-6 DOUBLE STACK PARKING LIFT

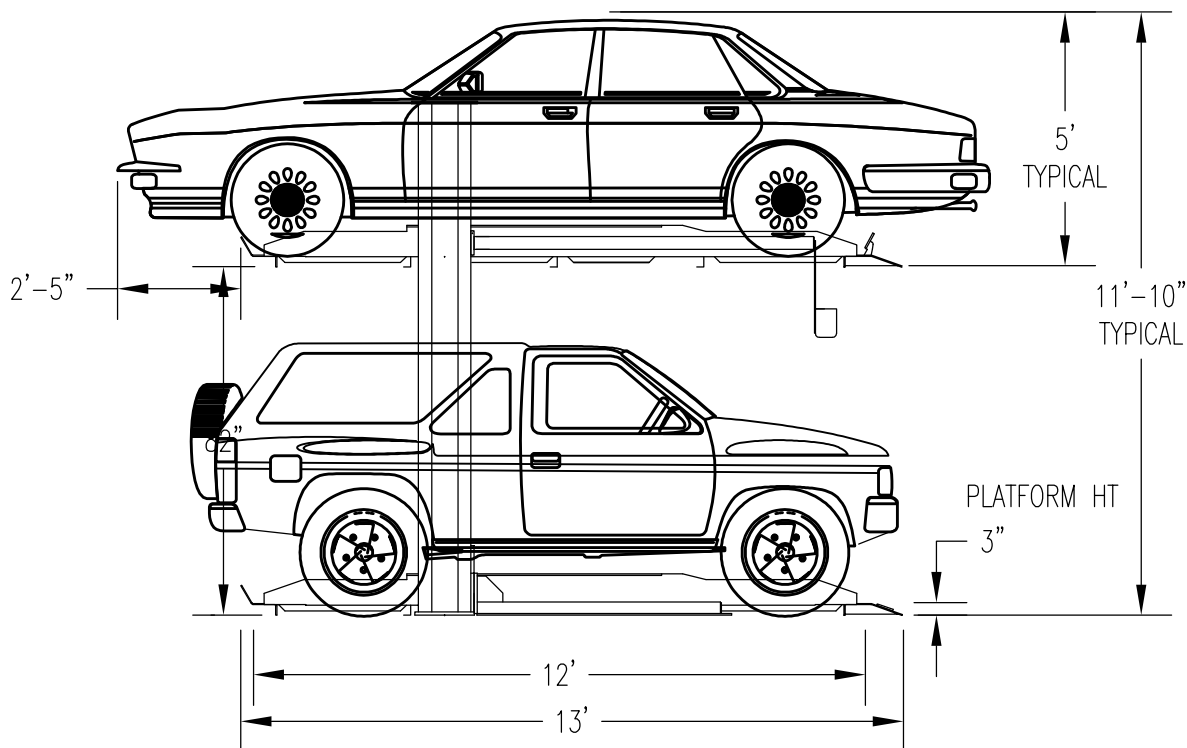
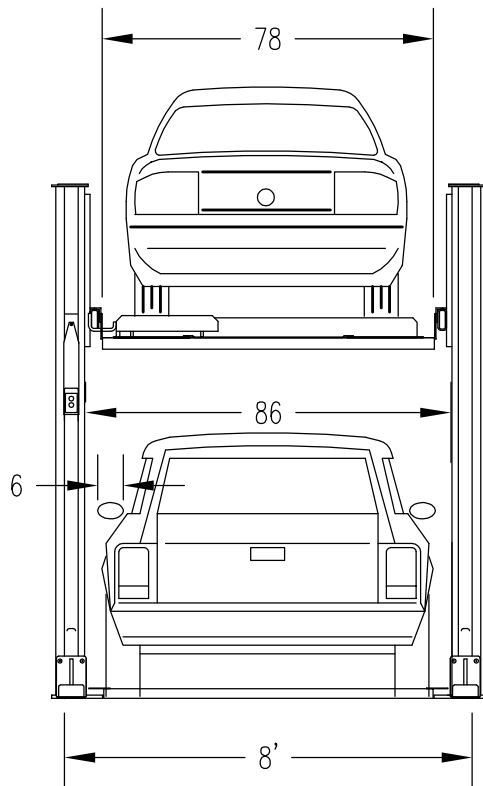
Clearance and space required



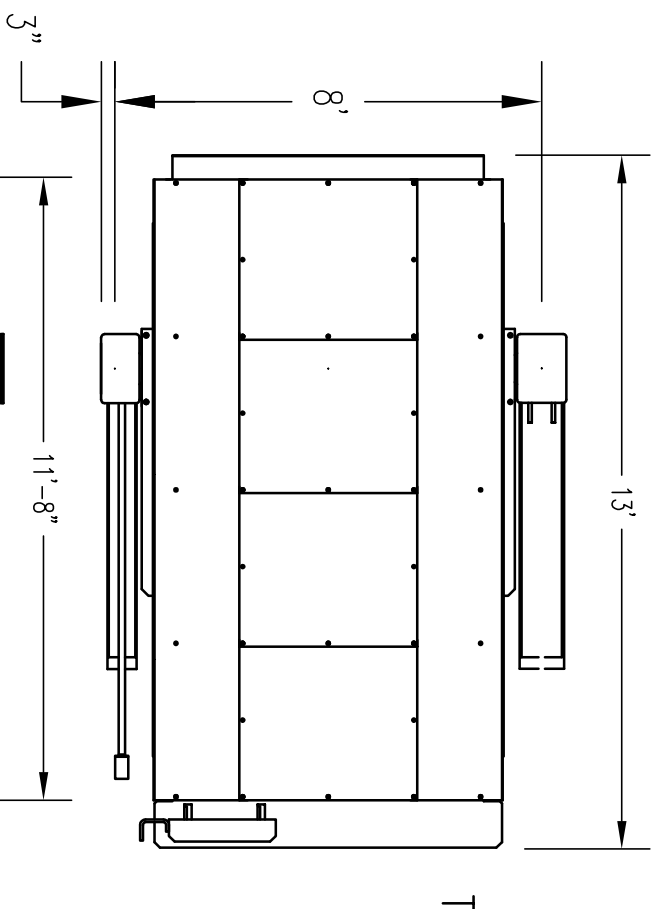
619-286-5438

or

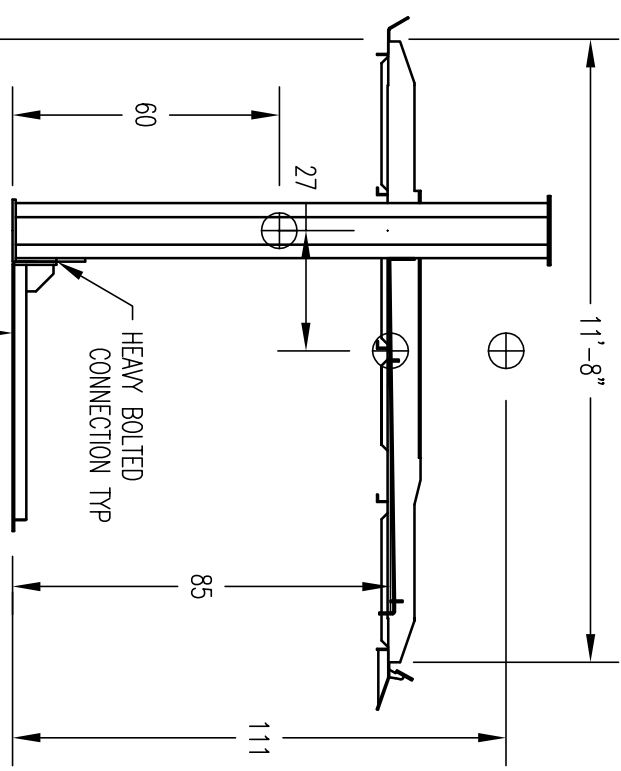
888-711-LIFT



SPECIFICATIONS SUBJECT TO CHANGE WITHOUT NOTICE OR LIABILITY

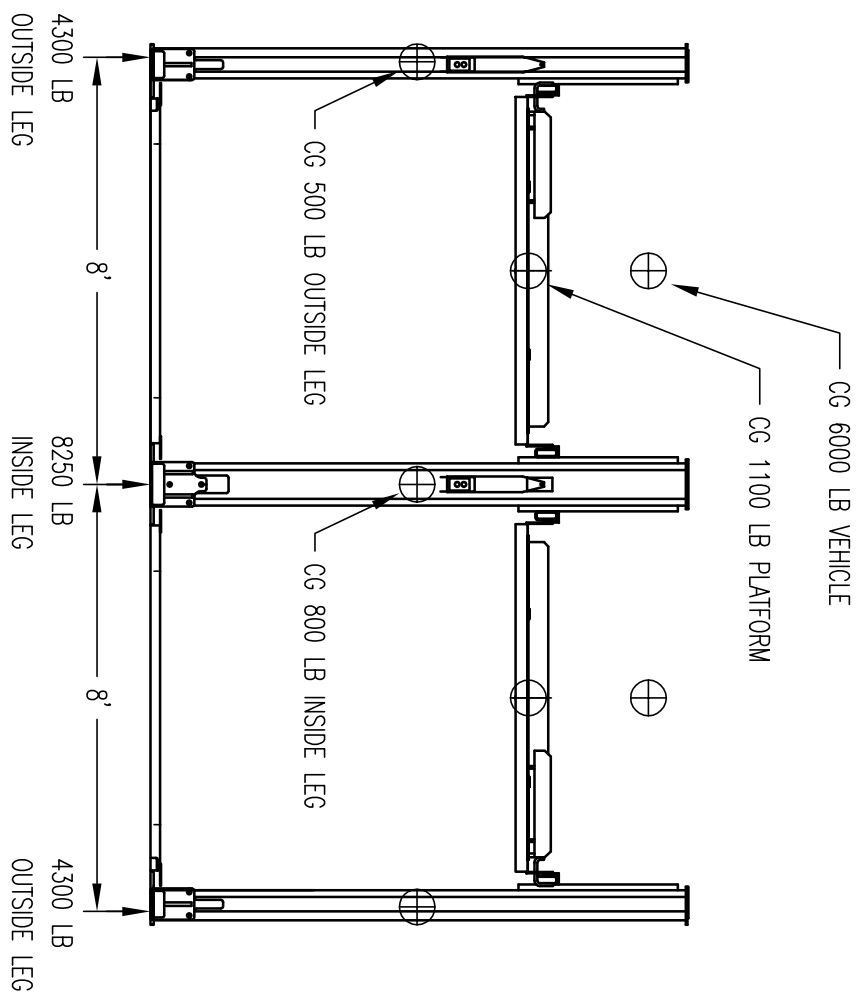


TOP VIEW



8250 LB
INSIDE LEG
4300 LB
OUTSIDE LEG

END VIEW



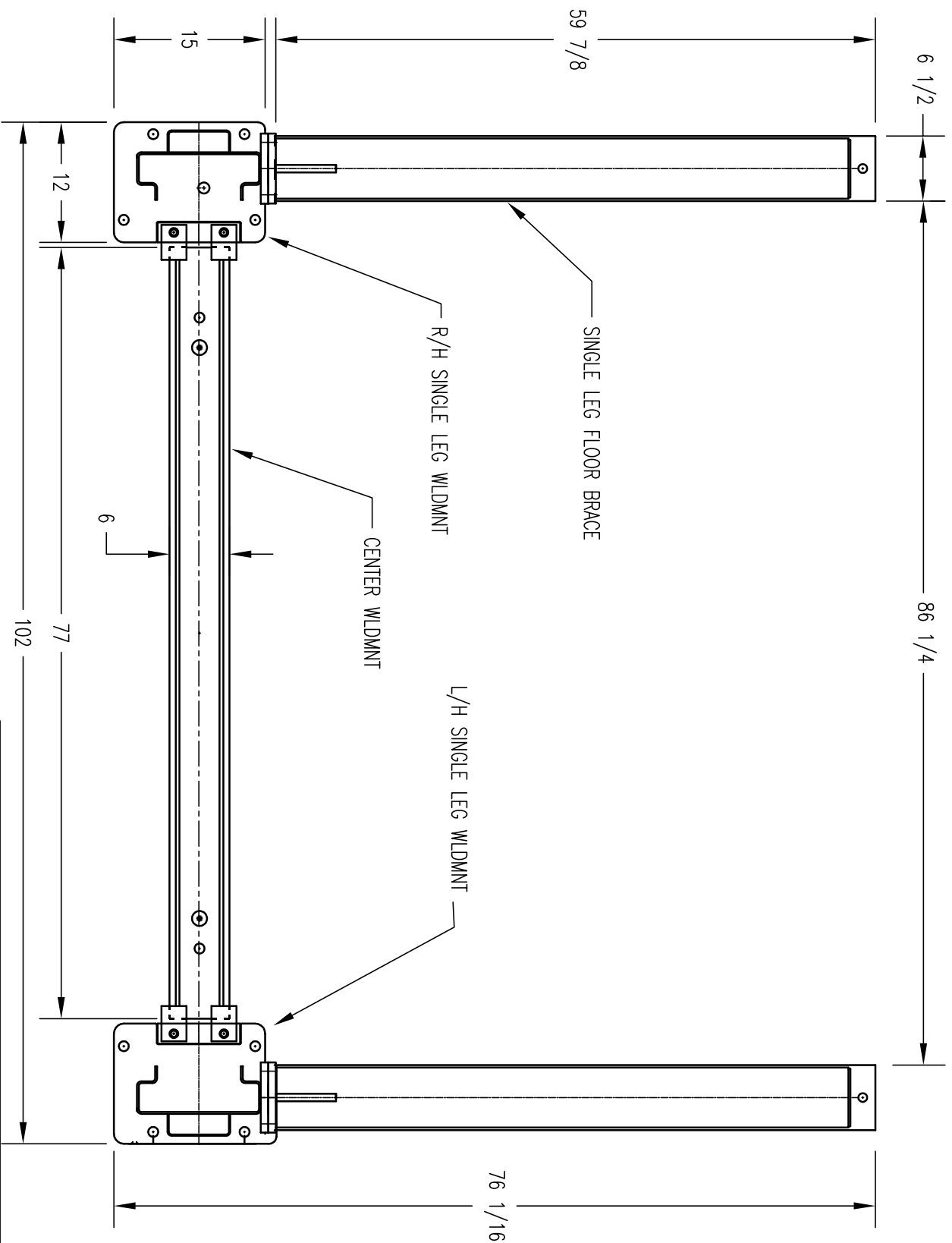
FRONT VIEW

LOAD REACTIONS P 602 DOUBLE PARK LIFT

NOTICE: THIS DRAWING AND ITS CONTENTS ARE THE PROPERTY OF AMERICAN CUSTOM LIFTS, AND THEY ARE NOT TO BE COPIED OR USED IN ANY WAY WITHOUT THE EXPRESSED WRITTEN CONSENT OF AMERICAN CUSTOM LIFTS INC.

TOL: FRACT ±1/16 .XX ±.020 .XXX ±.005

DATE: 7.12.06	FILE: P602 LAY-
SCALE: 35:1	DUT AND INSTAL
RQD:	
P/N	REV



BASE SUPPORT DETAIL, SINGLE UNIT
P 602 DOUBLE PARK LIFT

AMERICAN
Custom Lifts

DATE: 10.25.06	
SCALE:	
FILE: P602 ACC-6 LOADS	
P/N	REV

AMERICAN CUSTOM LIFTS

STANDARD COMMERCIAL LIMITED WARRANTY

All American Custom Lifts (ACL) surfaced mounted lifts and shop equipment are warranted to the original owner for one year from invoice date against manufacturing and material defect. A C L shall either repair or replace, at ACL's option, for the first year those parts returned to the factory (freight prepaid) which prove upon inspection by ACL to be defective. If a ACL Authorized Installer has performed the installation per ACL specifications, ACL shall pay for reasonable costs of transportation and labor for replacement of said parts for the first 12 months only.

All ACL's parts and accessories are warranted to the original owner for 12 months and 10 years on the structure from invoice date. ACL shall replace for the first 12 months those parts returned to the factory which prove upon inspection by ACL to be defective.

All warranty must be approved by ACL in advance with an assigned Case #. A C L will use authorized service partners to conduct any/all approved service work. A return authorization (RA) number must be assigned by ACL prior to any part return. When requested, the lift owner must return the product/part at their cost for inspection and determination of warranty credit.

This warranty shall not apply unless the product is installed, used, operated and maintained according to ACL's specifications as set forth in ACL's Installation and Operation Manual.

This warranty shall not apply when failure is caused by the purchaser's misuse, abuse, neglect or by unauthorized alterations or repairs. Use of any unapproved parts or accessories will void the warranty. This limited warranty extends only to the original purchaser and is not transferable.

This warranty does not cover normal maintenance or adjustments, damage or malfunction caused by improper handling, installation, abuse, misuse, negligence, carelessness of operation, or normal wear and tear. Consumable type items are not covered by this warranty.

This warranty is exclusive to the United States and Canada and is in lieu of all other warranties expressed or implied including any implied warranty of fitness for a particular purpose, which implied warranties are expressly excluded. No employee, representative, dealer or other person or entity is authorized to give any warranties of any nature on behalf of ACL.

The remedies described are exclusive and in no event shall ACL be liable for special, consequential or incidental damages for the breach of or delay in performance of the warranty.

This warranty shall be governed by the Commonwealth of California, and shall be subject to the exclusive jurisdiction of the Court in the Commonwealth of California in the County of Sacramento.