

AMERICAN *Custom Lifts*

QFP09: 9,000 lb Floor Plate 2-Post Lift



model#: QFP09

9,000 lb. capacity 2-Post

Ideal for Low Ceiling Applications
3- Stage Arms for maximum
vehicle lifting flexibility
Provides both Asymmetric/Symmetric
lifting capabilities

\$3,195.00 F.O.B KY

American Lift Systems, Inc.
DBA:
**AMERICAN
Custom Lifts**

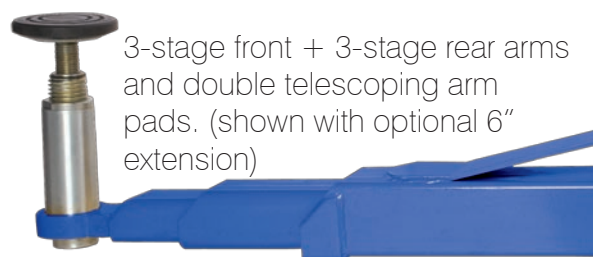


Floor Plate 2-Post Lift

model: QFP09

- 10' 7/8" overall column height is ideal for low ceiling.
- 3-Stage Front and Rear Arms.
- Heavy duty chain over electric hydraulic in operation with cable equalization.
- Heavy duty column construction.
- Dual point mechanical pull-lock cable release.

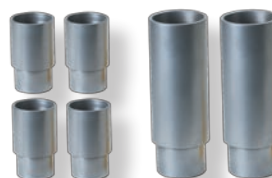
The QFP09 features a Heavy-Duty chain lifting system with cable equalization.



SPECIFICATIONS	Model: QFP09
Lifting Capacity	9,000 lbs. (4082 kg)
Rise Height	79 1/8" ¹ (2010 mm)
Column Height	10' 7/8" (3070 mm)
Drive-thru Clearance	98 3/16" (2494 mm))
Front Arm Reach	24 1/2" - 44 1/2" (623 - 1131 mm)
Rear Arm Reach	24 1/2" - 44 1/2" (623 - 1131 mm)
Screw Pad Height	3 7/8" - 7 1/8" ² (105 - 181 mm)
Inside of Columns	109" (2769 mm)
Ceiling Height Required	10' 1 7/8" (3096 mm)
Motor	2HP, Single Phase, 60Hz
Voltage	208 - 230v
Speed of Rise	60 seconds
Max. Load Per Arm	2,250 lb. (1020 kg)
[*] Lift capacity ratings are based on loads equally distributed on all four arms. ¹ Rise height measure with telescoping screw pad in highest position. ² Specifications are listed without rubber pad for measurements with rubber pad add 1/4" (6mm)	

OPTIONAL ACCESSORIES:

10315:
(4) 3" Stack Extensions, (2) 6" Stack Extensions and (2) Organizer Racks with hardware (\$290.44)



10313:
(2) 6" Stack Adapters Extensions (\$99.64)



10314
(2) U-Shaped Frame Truck Adapters (\$170.00)



10318:
(4) U-Shaped Frame Truck Adapters (\$340.00)



American Lift Systems, Inc.
DBA:
AMERICAN Custom Lifts